



# Wright Technologies Inc.

## Broadband Frequency Operation

<b>TECHNICAL DATA SHEET</b>
-----------------------------

**RoHS COMPLIANT**

<b>ATL50B-3010</b>
<b>0010</b>

**FEATURES**

- |   |  |
|---|--|
| <ul style="list-style-type: none"> <li>* 1-50 Ghz Frequency Operation</li> <li>* P-1dB: +10 dBm typical</li> <li>* Small Signal Gain: 30 dB minimum</li> <li>* Gain Flatness: +/- 3.5 dB typical</li> <li>* High Output IP3: 25 dBm typ.</li> <li>* Noise Figure: 5.0 dB typical</li> </ul> | <ul style="list-style-type: none"> <li>* 50 Ohm Input and Output Matched</li> <li>* -20 to +75 °C Operating Temperature</li> <li>* Unconditionally Stable</li> <li>* Single DC Bias Supply</li> <li>* Built-in DC Voltage regulation</li> <li>* Small Size and Weight, Yet Robust</li> </ul> |
|---|--|

**APPLICATIONS**

- |   |   |   |
|---|---|---|
| Laboratory Applications<br>R&D Lab Use<br>Radar Systems<br>Electronic Warfare<br>Telecom Infrastructure | Test Instrumentation<br>Military and Space<br>Communications Systems<br>Satellite Communications<br>Wireless Communications | Microwave Radio Systems<br>Power Amplifier<br>General Purpose Amplifier<br>RF Front Ends<br>Fiber Optic Interface |
|---|---|---|

Freq. In GHz	Gain dB	P-1 dBm	Input VSWR	Output VSWR	Noise dB
1.0	31.9	20.0	1.02	1.19	3.8
13.3	31.8	19.6	1.23	1.21	3.4
25.5	34.6	18.3	1.72	1.02	3.6
37.8	36.0	15.6	2.25	1.18	4.9
50.0	34.4	11.5	1.39	1.54	6.7
Min.	31.1	9.5	---	---	---
Max.	36.9	---	2.44	2.49	6.7
Spec.	30 Min	10 Typ.	2.50 Max	2.50 Max	5.0 Typ

Bias @ +15.0 V, IT =  $\frac{360}{350}$  mA  
mA TYP

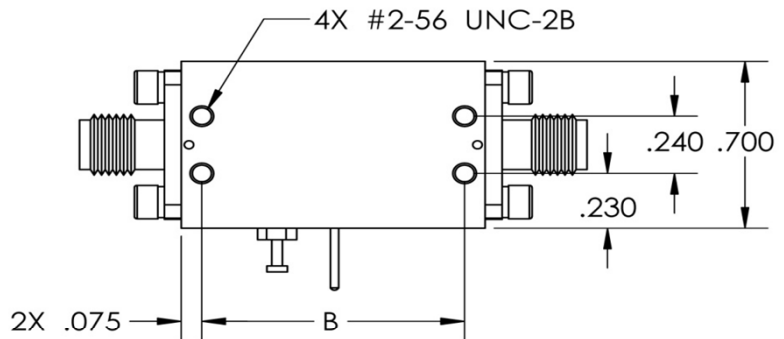
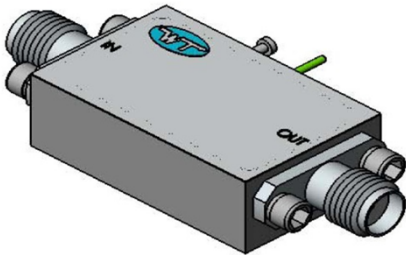
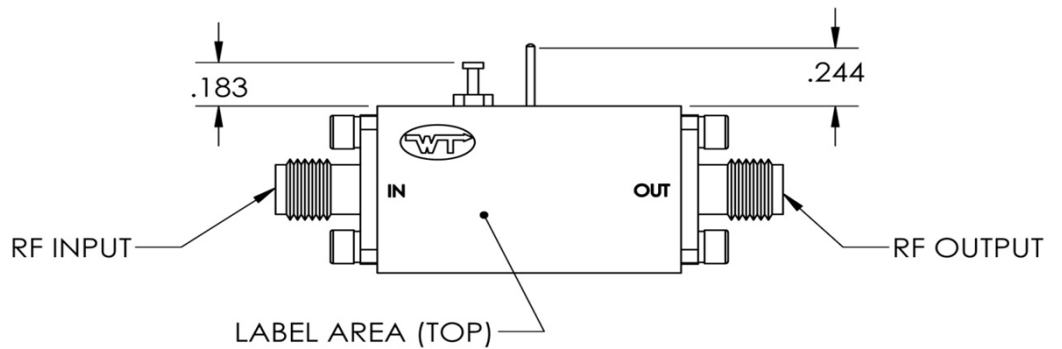
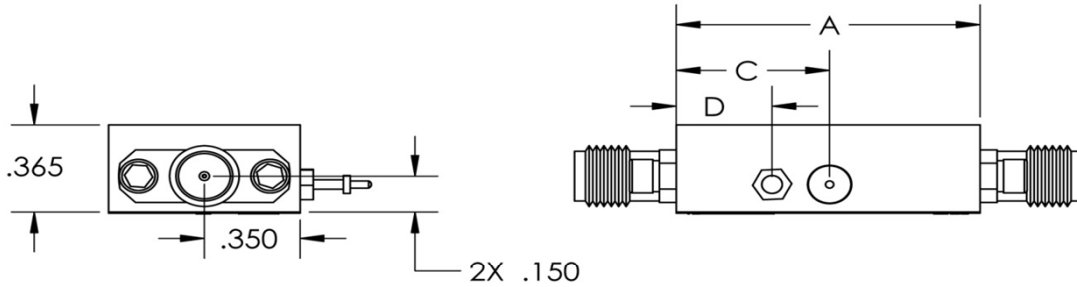
All Measurements Taken at 25°C Ambient Room

Wright Technologies Inc.  
 1352 Blue Oaks Blvd Suite 140  
 Roseville, CA 95678

**Contact Us**

Phone: (916) 773-4424  
 Fax: (916) 760-2770  
 E-mail: [sales@wrighttec.com](mailto:sales@wrighttec.com)

**ATL50B-3010**  
**6 VV TYPE CASE**



COAX CONNECTOR OPTIONS:  
 SMA, 2.9mm, 2.4mm

WAVEGUIDE OPTION AVAILABLE  
 UPON CUSTOMER REQUEST

- APPLICATION NOTES:  
 UNLESS OTHERWISE SPECIFIED  
 1) ALL DIMENSION TOLERANCES  
 $\pm .010$  AFTER PLATING  
 2) RF CONNECTORS ARE K FEMALE  
 3) INTERPRET DRAWING PER ASME  
 Y14.5M-1994

TYPE	A	B	C	D
3	.910	.760	.560	.350
4	1.110	.960	.560	.350
6	1.510	1.360	.960	.750
8	1.910	1.760	1.360	1.150

**Wright Technologies Inc.**

TITLE

**WT KK, VV SERIES**



# Wright Technologies Inc.

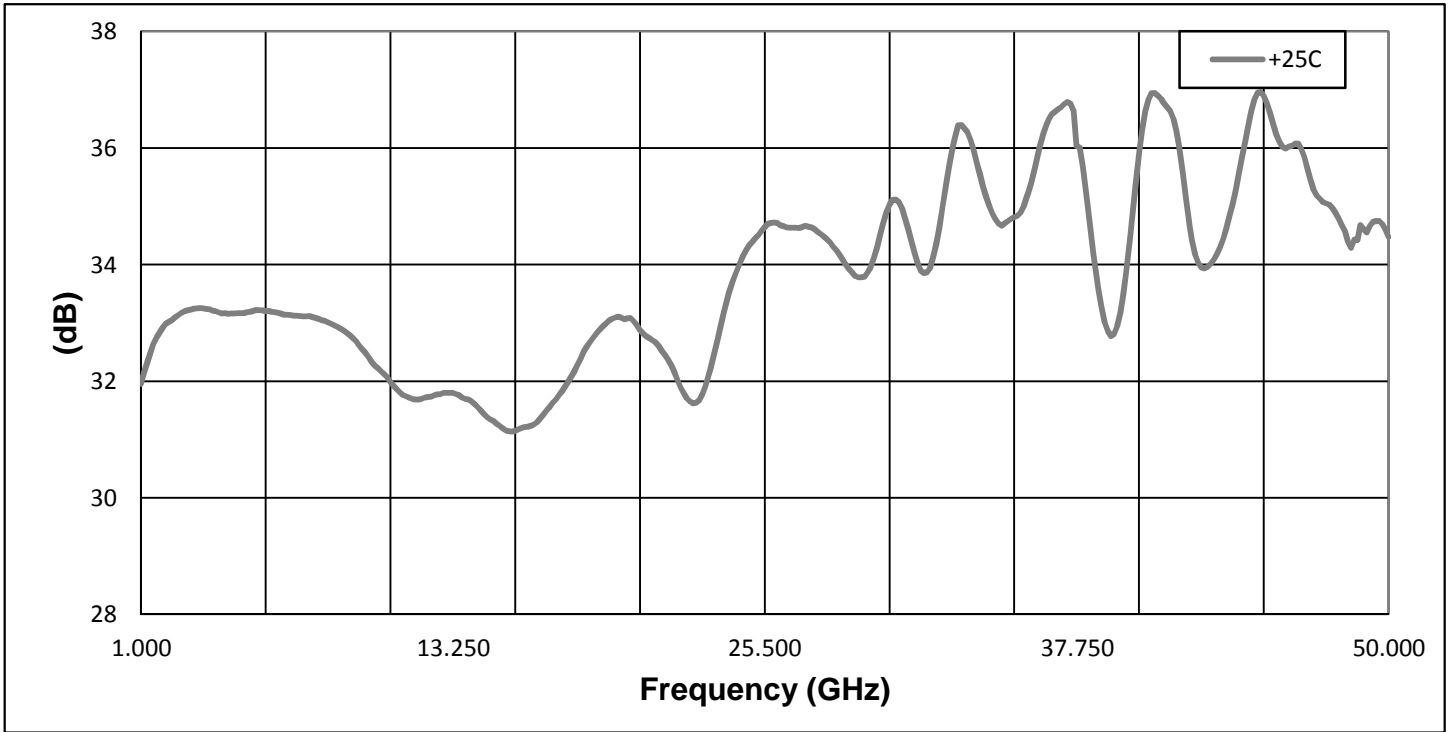
Broadband Frequency Operation

DATA PLOTS

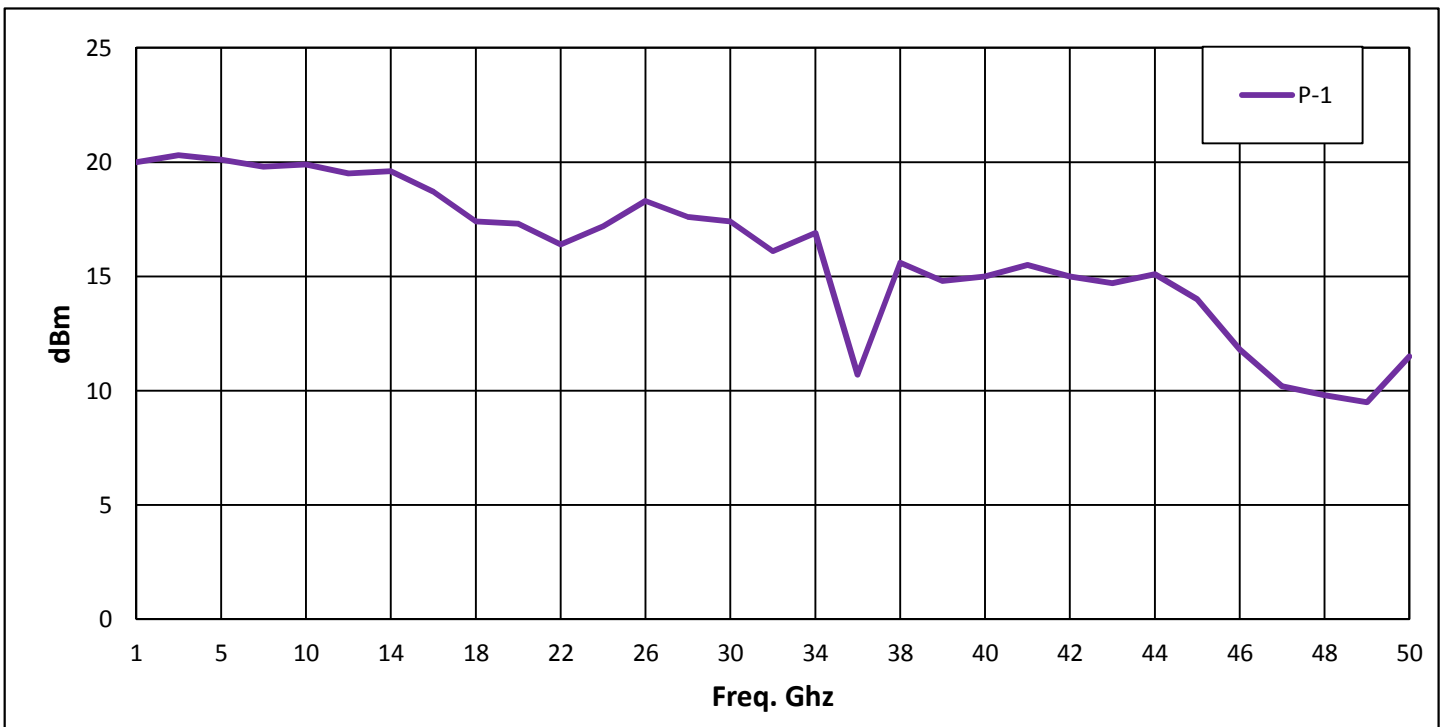
RoHS COMPLIANT

ATL50B-3010  
0010

## Gain



## Power dBm





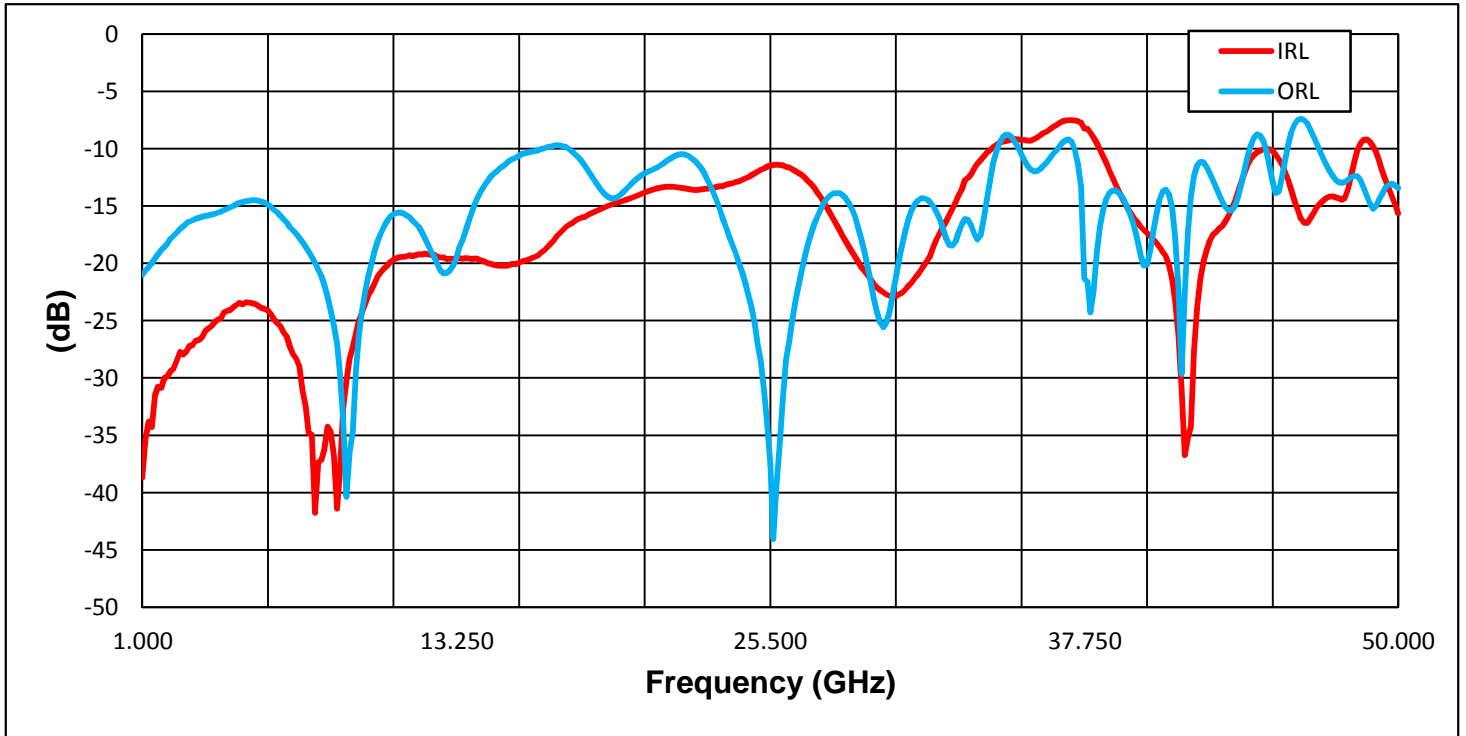
# Wright Technologies Inc.

Broadband Frequency Operation

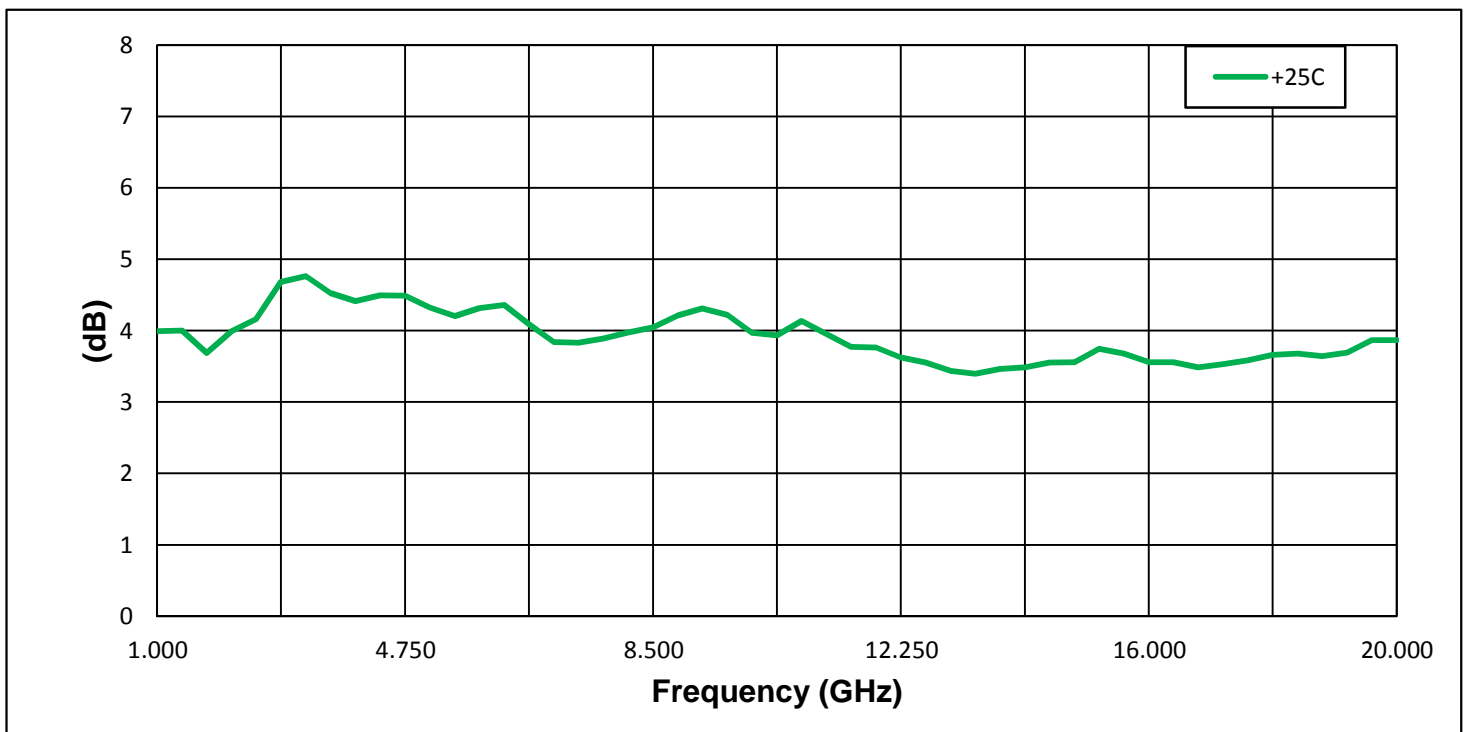
DATA PLOTS

RoHS COMPLIANT  
Return Loss

ATL50B-3010  
0010



## Noise (2-20 GHz)





# Wright Technologies Inc.

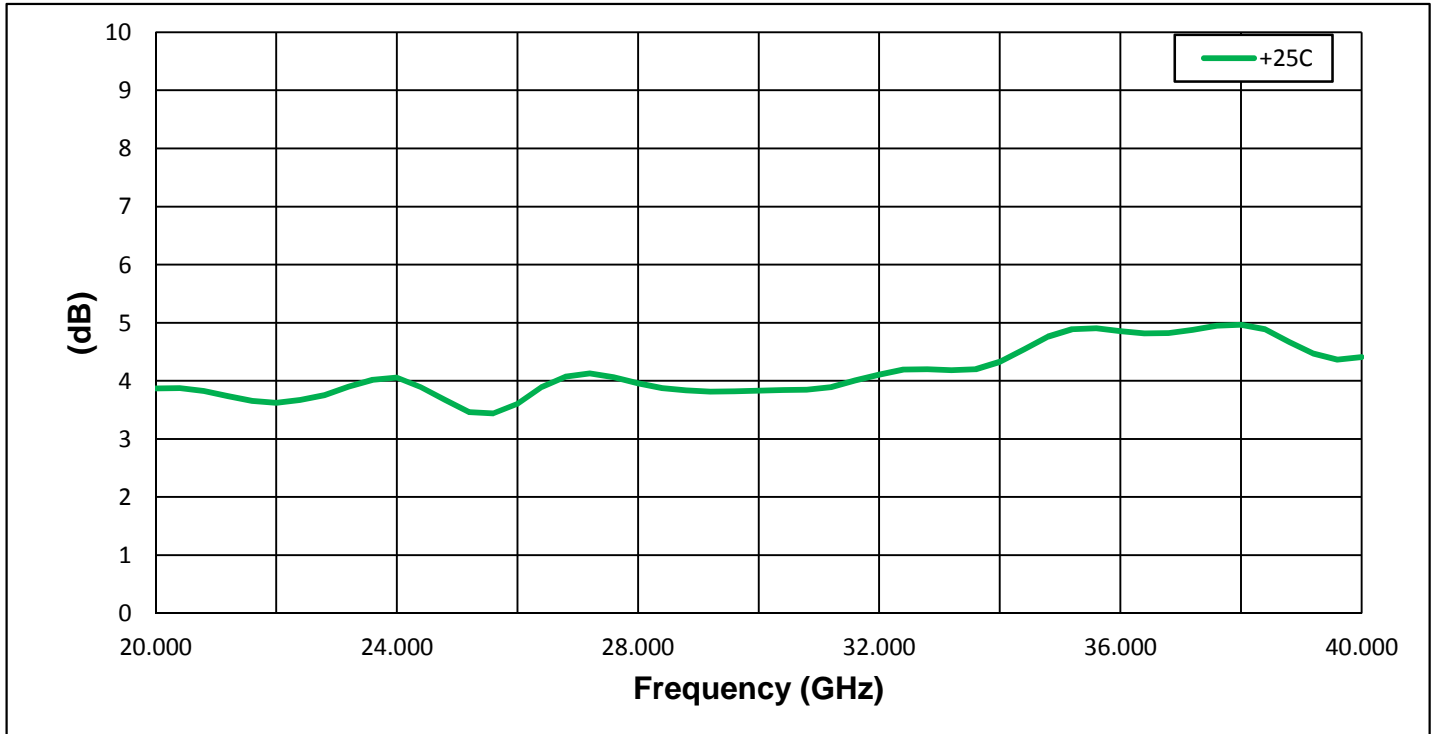
Broadband Frequency Operation

DATA PLOTS

RoHS COMPLIANT

ATL50B-3010  
0010

## Noise (20-40 GHz)



## Noise (40-50 GHz)

